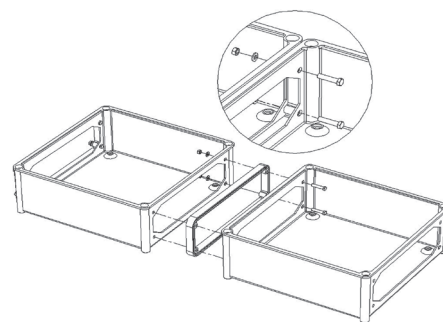
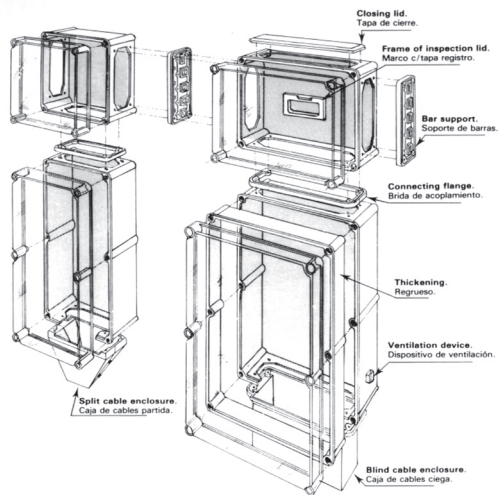


# safybox CA

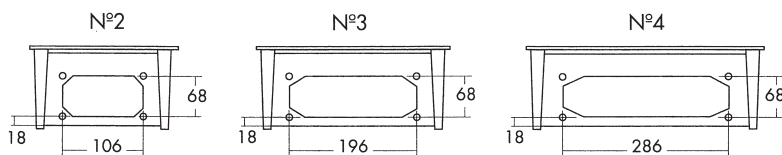
## Double Insulation Boxes



Coupling Flanges to connect enclosures between each other to build modular panels

Modular System for panel building

Standard Openings





We fully customize the enclosures as per your requirements : Cutouts, windows...

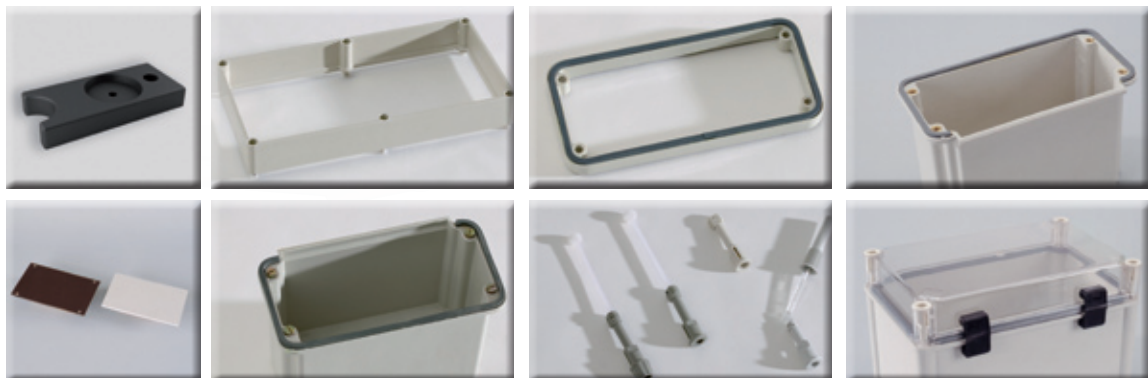


## SAFYBOX CA (IP66 & IK10)

Double Insulation Polyester Boxes. Fully Customization. Light Grey colour RAL7035. Self-extinguishing and UV stabilized

### Big range of **acesories** available:

Wall mounting brackets, depth extensions, coupling flanges, mounting plates, hinges, ventilation devices, viewing windows...

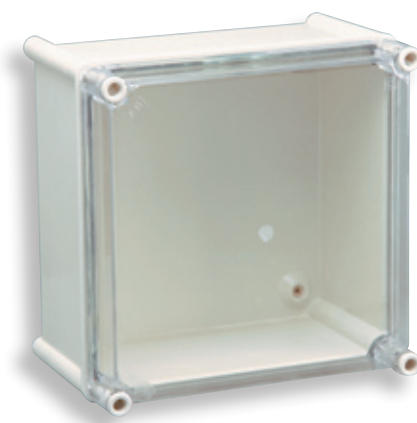


### Double Insulation Boxes

#### CLEAR COVER

Includes : Polyamide rear back panel • UV stabilized polycarbonate cover with gasket • bag with tft-4000 cover screws • M6x10 screws for back plate fixing

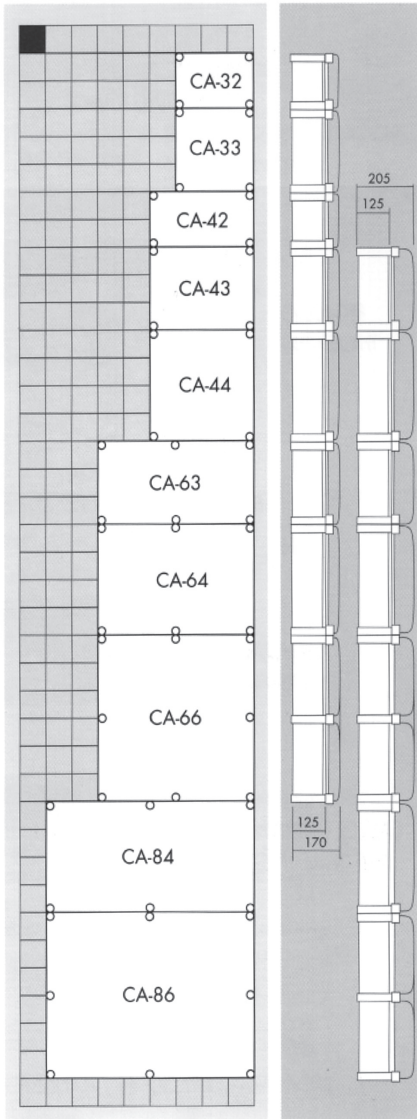
Part No.	Dimensions (mm.)	Price Euros	Packing	Weight
CA-1515	135X135X130	15,31	8	0,36
CA-215	180x135x130	17,24	8	0,41
CA-220	180x180x130	18,67	6	0,49
CA-315	270x135x130	19,58	4	0,53



Includes : Polyester rear back panel • UV stabilized polycarbonate cover with gasket • bag with tft-400 cover screws • M6x10 screws for back plate fixing

Part No.	Dimensions (mm.)	Price Euros	Packing	Weight
CA-32	270x180x170	25,17	4	1,21
CA-33	270x270x170	30,37	4	1,53
CA-42	360x180x170	27,31	4	1,32
CA-43	360x270x170	35,44	2	1,77
CA-43a	360x270x205	39,19	4	1,91
CA-44	360x360x170	45,97	2	2,31
CA-44a	360x360x205	49,06	2	2,42
CA-63	540x270x170	56,69	2	2,78
CA-63a	540x270x205	64,33	2	2,95
CA-64	540x360x170	73,24	1	4,33
CA-64a	540x360x205	79,57	2	4,06
CA-66	540x540x170	109,21	1	5,57
CA-66a	540x540x205	118,28	1	5,79
CA-84a	720x360x205	101,04	1	5,49
CA-86a	720x540x205	175,21	1	7,57

90 mm Modular Scheme



### OPAQUE COVER

Includes : Polyamide rear back panel • UV stabilized polycarbonate cover with gasket • bag with iff-4000 cover screws • M6x10 screws for back plate fixing

Part No.	Dimensions (mm.)	Price Euros	Packing	Weight
CA-1515s	135X135X130	15,31	8	0,36
CA-215s	180x135x130	17,24	8	0,41
CA-220s	180x180x130	18,67	6	0,49
CA-315s	270x135x130	19,58	4	0,53

Includes : Polyester rear back panel • UV stabilized polycarbonate cover with gasket • bag with iff-400 cover screws • M6x10 screws for back plate fixing

Part No.	Dimensions (mm.)	Price Euros	Packing	Weight
CA-32s	270x180x170	25,17	4	1,21
CA-33s	270x270x170	30,37	4	1,53
CA-42s	360x180x170	27,31	4	1,32
CA-43s	360x270x170	35,44	2	1,77
CA-43as	360x270x205	39,19	4	1,91
CA-44s	360x360x170	45,97	2	2,31
CA-44as	360x360x205	49,06	2	2,42
CA-63s	540x270x170	56,69	2	2,78
CA-63as	540x270x205	64,33	2	2,95
CA-64s	540x360x170	73,24	1	4,33
CA-64as	540x360x205	79,57	2	4,06
CA-66s	540x540x170	109,21	1	5,57
CA-66as	540x540x205	118,28	1	5,79
CA-84as	720x360x205	101,04	1	5,49
CA-86as	720x540x205	175,21	1	7,57

### CLEAR COVER FOR BUSBARS

IP41 & IK10.

Part No.	Dimensions (mm.)	Price Euros	Packing	Weight
CA-4829	480x290x195	44,31	2	2,79
CA-4840	480x405x195	51,10	1	3,62
CA-5840	580x405x195	65,15	1	4,29
CA-6340	630x405x195	69,62	1	4,72
CA-6329	630x290x195	60,24	1	3,32

### Polycarbonate Clear Covers UV Stabilized

Part No.	Description	Price Euros	Weight
TT-1515-cj	Gasket included. No fixing screws	4,63	0,09
TT-215-cj	Gasket included. No fixing screws	5,65	0,12
TT-220-cj	Gasket included. No fixing screws	5,90	0,15
TT-315-cj	Gasket included. No fixing screws	6,22	0,17
TT-32-cj	Gasket included. No fixing screws	8,58	0,29
TT-33-cj	Gasket included. No fixing screws	10,30	0,34
TT-42-cj	Gasket included. No fixing screws	10,98	0,33
TT-43-cj	Gasket included. No fixing screws	11,96	0,44
TT-43a-cj	Gasket included. No fixing screws	15,28	0,54
TT-44-cj	Gasket included. No fixing screws	17,07	0,64
TT-44a-cj	Gasket included. No fixing screws	20,24	0,79
TT-63-cj	Gasket included. No fixing screws	23,31	0,87
TT-63a-cj	Gasket included. No fixing screws	29,53	0,97
TT-64-cj	Gasket included. No fixing screws	31,21	1,19
TT-64a-cj	Gasket included. No fixing screws	36,74	1,37
TT-66-cj	Gasket included. No fixing screws	45,25	1,70
TT-66a-cj	Gasket included. No fixing screws	52,06	1,85
TT-84a-cj	Gasket included. No fixing screws	50,24	1,60
TT-86a-cj	Gasket included. No fixing screws	87,26	2,65



TT : CLEAR COVER

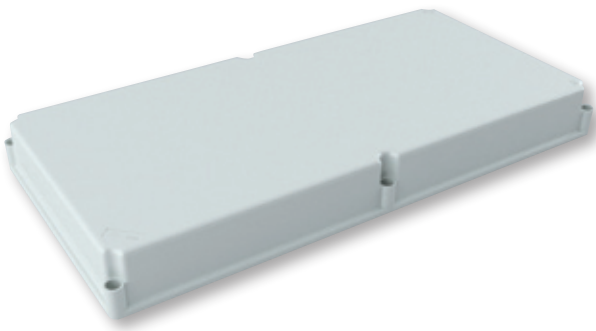
### Mounting Plates

Self-Extinguishing Polyester  
Light Grey colour RAL7035

Part No.	Description	Price Euros	Weight
PP-1515	Mounting Plate for CA-1515 enclosure	1,71	0,07
PP-215	Mounting Plate for CA-215 enclosure	2,05	0,08
PP-220	Mounting Plate for CA-220 enclosure	2,41	0,11
PP-315	Mounting Plate for CA-315 enclosure	2,77	0,12
PP-32	Mounting Plate for CA-32 enclosure	3,71	0,16
PP-33	Mounting Plate for CA-33 enclosure	5,33	0,26
PP-42	Mounting Plate for CA-42 enclosure	5,72	0,21
PP-43	Mounting Plate for CA-43 enclosure	6,49	0,48
PP-44	Mounting Plate for CA-44 enclosure	8,76	0,71
PP-63	Mounting Plate for CA-63 enclosure	9,07	0,81
PP-64	Mounting Plate for CA-64 enclosure	13,42	0,88
PP-66	Mounting Plate for CA-66 enclosure	23,33	1,64
PP-84	Mounting Plate for CA-84a enclosure	20,60	1,51
PP-86	Mounting Plate for CA-86a enclosure	32,64	2,29



**Polycarbonate Clear Covers UV Stabilized**

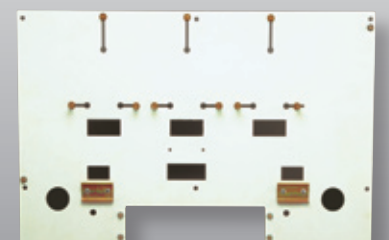
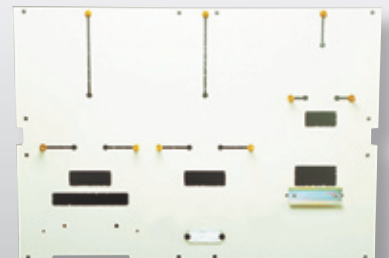


TO : OPAQUE COVER

Part No.	Description	Price Euros	Weight
TO-1515-cj	Gasket included. No fixing screws	4,63	0,09
TO-215-cj	Gasket included. No fixing screws	5,65	0,12
TO-220-cj	Gasket included. No fixing screws	5,90	0,15
TO-315-cj	Gasket included. No fixing screws	6,22	0,17
TO-32-cj	Gasket included. No fixing screws	8,58	0,29
TO-33-cj	Gasket included. No fixing screws	10,30	0,34
TO-42-cj	Gasket included. No fixing screws	10,98	0,33
TO-43-cj	Gasket included. No fixing screws	11,96	0,44
TO-43a-cj	Gasket included. No fixing screws	15,28	0,54
TO-44-cj	Gasket included. No fixing screws	17,07	0,64
TO-44a-cj	Gasket included. No fixing screws	20,24	0,79
TO-63-cj	Gasket included. No fixing screws	23,31	0,87
TO-63a-cj	Gasket included. No fixing screws	29,53	0,97
TO-64-cj	Gasket included. No fixing screws	31,21	1,19
TO-64a-cj	Gasket included. No fixing screws	36,74	1,37
TO-66-cj	Gasket included. No fixing screws	45,25	1,70
TO-66a-cj	Gasket included. No fixing screws	52,06	1,85
TO-84a-cj	Gasket included. No fixing screws	50,24	1,60
TO-86a-cj	Gasket included. No fixing screws	87,26	2,65

Part No.	Description	Price Euros	Weight
PP-1m-cb	pp-33 for 1 Single-Phase	6,12	0,41
PP-2m-cb	pp-43 for 2 Single-Phase	7,53	0,43
PP-1tm-cb	pp-43 for 1 Single/3-Phase	9,30	0,41
PP-1t-cb	pp-63 for a 3-Phase	10,30	0,80
PP-3m-cb	pp-63 for 3 Single-Phase	17,12	0,68
PP-3tm-cb	pp-64 for 3 Single/3-Phase	22,17	0,88
PP-9m-cb	pp-86 for 9 Single-Phase	55,34	2,00
PP-2tr-cb	pp-64 for 2 3-Phase & Clock	21,52	0,32
PP-3t3m-cb	pp-66 for 3 Single/3-Phase	41,17	1,45
PP-6tm-cb	pp-86 for 6 Single/3-Phase	53,87	2,41
PPC-3m-cb	pp-4829 for 3 Single-Phase	18,88	0,08
PPC-4m-cb	pp-6329 for 4 Single-Phase	22,59	0,10
PPC-3tm-cb	pp-5840 for 3 Single/3-Phase	24,40	1,19
PPC-2t-cb	pp-5840 for 2 3-Phase	23,70	0,10
PPC-3t-cb	pp-6340 for 3 3-Phase	23,78	1,19
BO-fi-pla	Set of screws for mounting plate	1,44	0,05
BO-fi-cont	Set of screws for meter	2,19	0,05

**Special Mounting Plates**



### END COVERS

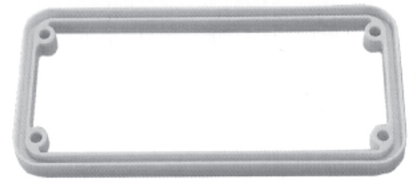
Part No.	Description	Dim. (mm.)	Price Euros	Weight
TC-02-cj	End cover with gasket and screws	133X105X13	8,21	0,14
TC-03-cj	End cover with gasket and screws	223X105X13	9,07	0,24
TC-04-cj	End cover with gasket and screws	313X105X13	11,08	0,25



TC-03-cj

### CONNECTING FLANGES

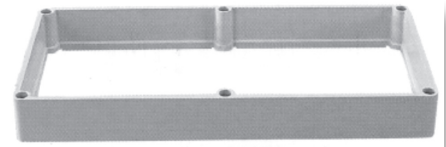
Part No.	Description	Dim. (mm.)	Price Euros	Weight
BA-20-cj	Connecting Flange with gasket and screws	132X104X23	7,02	0,12
BA-30-cj	Connecting Flange with gasket and screws	222X104X23	7,96	0,15
BA-40-cj	Connecting Flange with gasket and screws	312X104X23	9,84	0,19



BA-30-cj

### DEPTH EXTENSIONS

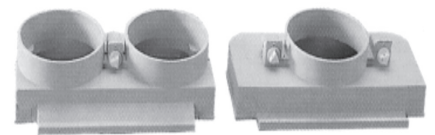
Part No.	Description	Price Euros	Weight
RE-63	Depth Extension for CA-63	85,70	1,43
RE-64	Depth Extension for CA-64	98,00	1,55
RE-66	Depth Extension for CA-66	159,93	3,94



RE-63

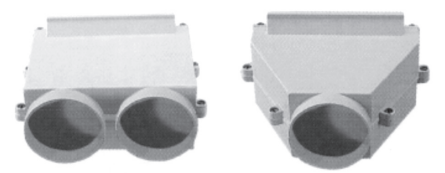
### CABLE ENTRY FLANGES

Part No.	Description	Price Euros	Weight
BPD-03	Double Split Cable flange	11,17	0,29
BPS-03	Split Cable flange	10,23	0,32
CC-03-cj	Blind Cable enclosure opening No.3	18,62	0,60
CC-04-cj	Blind Cable enclosure opening No.4	21,19	0,82
CCPD-03	Double Split Cable Enclosure	17,05	0,55
CCPS-03	Split Cable Enclosure	17,05	0,50
DON-45	Rubber Grommet	5,15	0,11



BPD-03

BPS-03

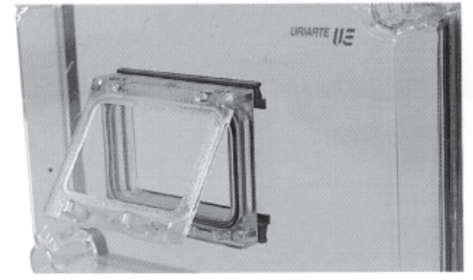


CCPD-03

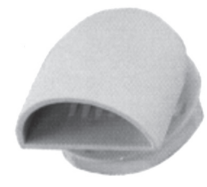
CCPS-03

### HINGED INSPECTION WINDOWS

Part No.	Description	Price Euros	Weight
TR-4	Hinged inspection window (94x77x16)	10,55	0,05
TR-4a	Hinged inspection window (94x77x25)	10,92	0,07
TR-6	Hinged inspection window (130x77x16)	12,01	0,08
TR-6a	Hinged inspection window (130x77x25)	13,27	0,09
TR-8	Hinged inspection window (163x77x16)	12,50	0,10
TR-8a	Hinged inspection window (163x77x25)	13,94	0,11
TR-10	Hinged inspection window (200x77x16)	15,12	0,12
TR-10a	Hinged inspection window (200x77x25)	16,96	0,14
TR-12	Hinged inspection window (233x77x16)	16,51	0,14
TR-12a	Hinged inspection window (233x77x25)	19,14	0,15
TR-16	Hinged inspection window (165x195x13)	19,39	0,16
TR-20	Hinged inspection window (205x158x15)	19,94	0,18
TR-24	Hinged inspection window (233x196x13)	22,19	0,22



TR-6



DV-m

### VENTILATION DEVICES

Part No.	Description	Price Euros	Weight
DV-m	Ventilation Device Mini	0,85	0,01
DV-g	Ventilation Device Big	3,01	0,03

### WALL MOUNTING BRACKETS

Part No.	Description	Price Euros	Weight
OFC-4000	Metal bracket for CA-1515, 215, 220, 315 (1 piece)	0,73	0,01
OFC-400	Plastic bracket for rest of the CA range (1 piece)	0,98	0,03



OFC-400

### SCREWS FOR COVER FIXING

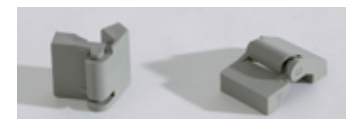
Part No.	Description	Price Euros	Weight
TFT-4000	Screw for CA-1515, 215, 220, 315	0,28	0,01
TFT-400	Screw for rest of the CA range	0,31	0,01
TFT-400-m	Manual operating Screw	0,70	0,01
TTC-160	Triangular Screw for Safybox-GL range	1,61	0,01



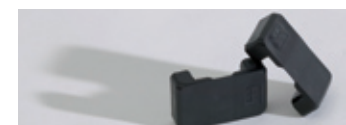
TFT-400

### HINGES

Part No.	Description	Price Euros	Weight
BFE	External flexible hinge (set of 2)	2,64	0,01
bo-BRE-ext	External rigid hinge (set of 2)	10,55	0,05
BRI-int	Internal rigid hinge (1 piece)	2,31	0,01
BRI-int-tor	Internal rigid hinge screw fixing (1 piece)	24,12	0,05



bo-BRE-ext



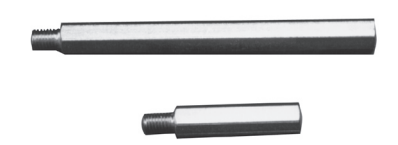
BFE

### RAISERS

Part No.	Description	Price Euros	Weight
P10-m6	Raiser M6 x 10 mm.	0,43	0,01
P15-m6	Raiser M6 x 15 mm.	0,47	0,01
P20-m6	Raiser M6 x 20 mm.	0,54	0,01
P30-m6	Raiser M6 x 30 mm.	0,60	0,02
P40-m6	Raiser M6 x 40 mm.	0,68	0,02
P50-m6	Raiser M6 x 50 mm.	0,75	0,03
P60-m6	Raiser M6 x 60 mm.	0,81	0,03
P70-m6	Raiser M6 x 70 mm.	0,84	0,04
P80-m6	Raiser M6 x 80 mm.	0,97	0,04
P90-m6	Raiser M6 x 90 mm.	1,10	0,05
P100-m6	Raiser M6 x 100 mm.	1,18	0,05



BRI-int



Raisers